



LIVE TRAVEL INFORMATION

Novus-LTS For Local Authorities




Modern public transport passengers are no longer willing to turn up at a bus stop and wait for a bus that may or may not show up on time. Accurate, reliable and available information cannot be viewed as a 'nice to have': today's passengers demand high quality information available wherever and whenever required.

If people are to choose public transport ahead of other options they must have access to accurate, trusted and easily understood information. This information process can be a journey in itself, with a variety of considerations such as: How do I reach my destination? What are my options? Is there a less expensive option? Where do I board? Is the bus delayed? Will I get a seat? Are there any disruptions?

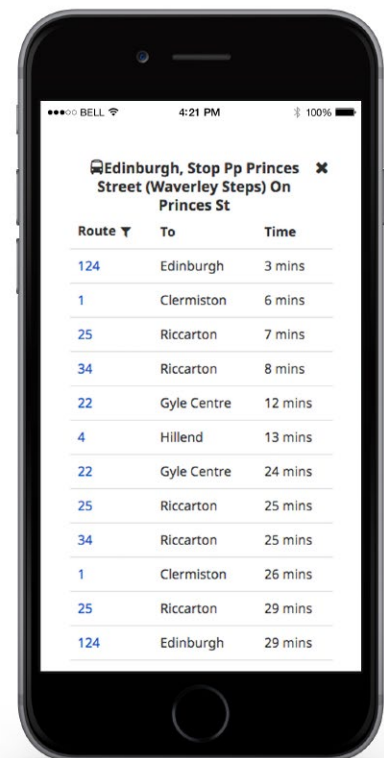
It is vital that local authorities are able to provide this kind of information if passengers are to make the sustainable choice to use public transport.

Trapeze's Novus-LTS (Live Travel Suite) enables authorities to deliver all of the above and more, retaining control over the information provided, as well as the ability to change information at a moment's notice, as was required during the COVID-19 crisis.

Key Benefits

 **Simple: Easy to manage and update**

- Fast & Accurate: Information is live the next day
- Empower passengers to choose public transport
- Provide accurate information through periods of disruption
- Retain control over your transport information
- Maintain the client relationship



*Live departures in real time,
Optimised for mobile*

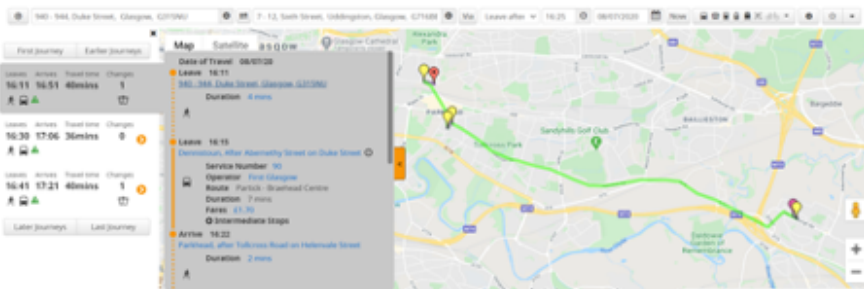
Overview

Elements

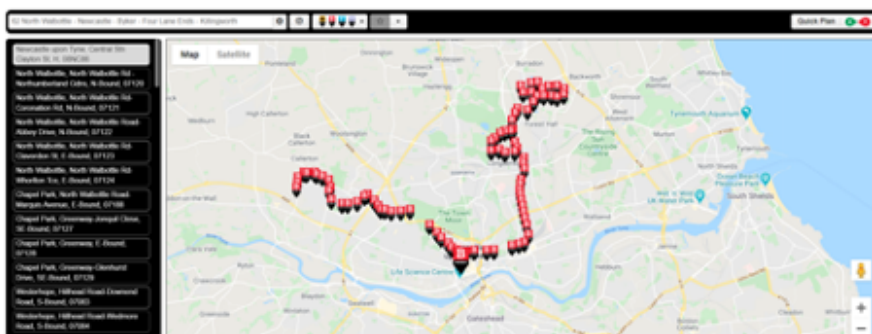
- View departures in real time
- Interactive map
- Plan a journey
- View Routes
- Responsive web platform – works on all devices
- Manage disruptions
- Multimodal: bus, train, ferry, metro, subway, tram, cycles, walking
- Location aware: see nearby departure info
- Link to additional information
- Save Favourite stops – access departure info with one click
- Delivered in your corporate brand

Trapeze and Live Travel Suite

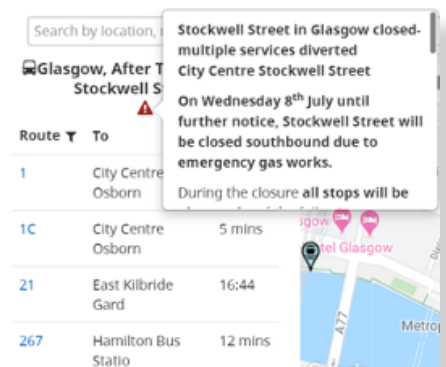
- Live Travel Suite integrates with existing information and real-time information systems
- Greatest control over data accuracy when integrated with existing Trapeze solutions for both static (Novus-FX) and Real Time (Novus-RT) bus information
- Live Travel Suite is tailored to your requirements and designed to fit your style and brand. By providing your own information you can maintain your client relationship, control the quality of information they receive, and ensure it is your message they receive when looking for travel information
- Trapeze’s Live Travel Suite brings together real-time data from multiple sources, enabling bus operators and Local Authorities to deliver passengers a fully integrated and information-rich experience
- Flexible: Trapeze can offer custom developments to ensure you are able to completely meet passengers’ needs



Plan a trip



View Routes



Manage disruptions

Connect with our Experts