



REAL TIME PASSENGER INFORMATION

Novus-RT For Local Authorities



In recent years public transport has been completely transformed and can no longer be seen as the poor cousin to the car. Today's public transport users enjoy a more comfortable, relaxing and reliable service – largely as a result of improvements delivered through modern technology.

Central to this change is real-time passenger information (RTPI), which ensures passengers no longer have to wait by the roadside hoping for a bus to arrive. RTPI tells passengers when their bus will arrive, ensuring they are fully informed and able to assess the transport options available to them. Informed passengers are more inclined to choose public transport – thereby promoting better air quality, cleaner urban environments and reduced congestion. As confidence in the reliability and service quality of public transport grows, this trend is set to continue.

Novus-RT consolidates real-time information received from different sources, generates departure predictions, and then delivers this information to roadside displays, apps, Traveline and other third party systems. It also provides powerful Business Intelligence facilities to analyse performance, and tools to modify schedules 'on the fly'. Novus-RT also offers Traffic Light Priority functionality to enable buses to request a green light, reducing trip time variability and further improving accuracy of information for passengers.

By linking with Trapeze's Live Travel Suite, it is also possible to deliver this information wherever it is needed – into passengers' hands via their Smartphones, or to their computer in the form of a web-based Journey Planner.

Key Benefits



Real-Time: Real Benefits

- Raise confidence in public transport to increase patronage
- Improve service levels to passengers
- Simple & accurate access to schedule analysis
- Easily compare planned and actual schedules to make required improvements
- Integrate with powerful business intelligence tools for KPI tracking and visualisation
- Seamless link with Trapeze's Live Travel Suite to present real-time information wherever/whenever needed
- Drive on-street information displays

Overview

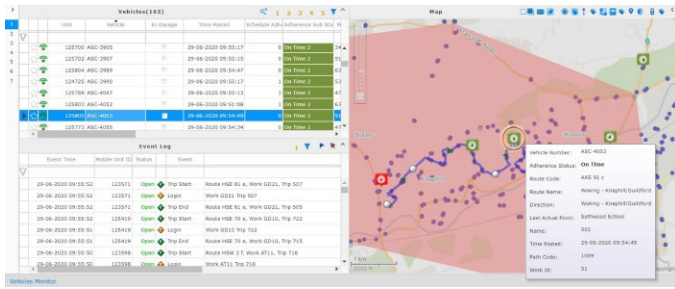
Web-based

- Flexibility to work where required
- Hosted solution reduces IT costs
- Simple, fast and cost-effective implementation

Open Standards Architecture

Novus-RT complies to UK standards (NaPTAN, TransXChange, RTIG). Future standards supported as part of roadmap for peace of mind.

- Integration with existing scheduling solutions saves time and money and improves data quality
- Interface with RTIG-compliant Electronic Ticket Machines
- SIRI export for both Vehicle and Stops centric data
- Suite of reports with multiple export formats



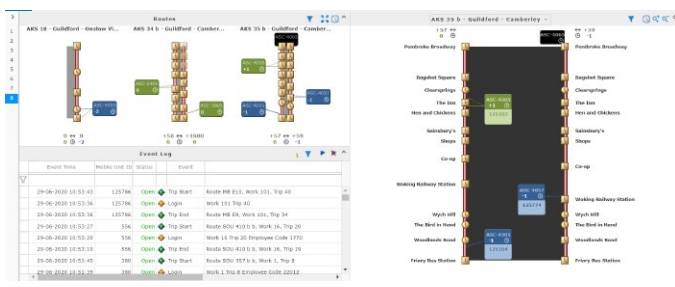
Track Vehicles in real time

Simple Workflows

- Import service data (ATCO.Cif/TransXChange)
- Receive events from ETMs (RTIG)
- Accurately predict next bus arrival/departure
- Communicate with bus operators' real-time systems or other authorities' systems via SIRI
- Generate traffic light pre-emption requests to Local Authority UTC systems using RTIG standards
- Allows bus operations managers to manage their bus operations in real time by providing details of:
 - Active vehicles & service assignments, status, schedule adherence, location & vehicle state
 - Current vehicle position & status on map/line route
 - Late running buses; emergency notifications; or talk requests in event queues
- Provide comprehensive reports on schedule adherence, network operation & system performance



Manage scheduled data



Manage Bus operations



Analyse Performance

Connect with our Experts