

HOW RTPI IN AIRPORT BUSES WORKS

FOR EVERYONE

RTPI is beneficial for both passengers and operators. Operators can track both location of buses and passenger numbers, enabling more accurate and efficient planning and detailed bus information for passengers.



CAR PARKS

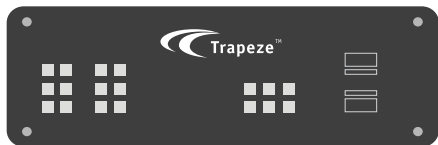
- 1 **'At stop' real-time signs show passengers when the next bus will arrive.**

Accuracy of information ensures greater confidence in services, improving customer satisfaction and producing a more efficient, cost effective service.



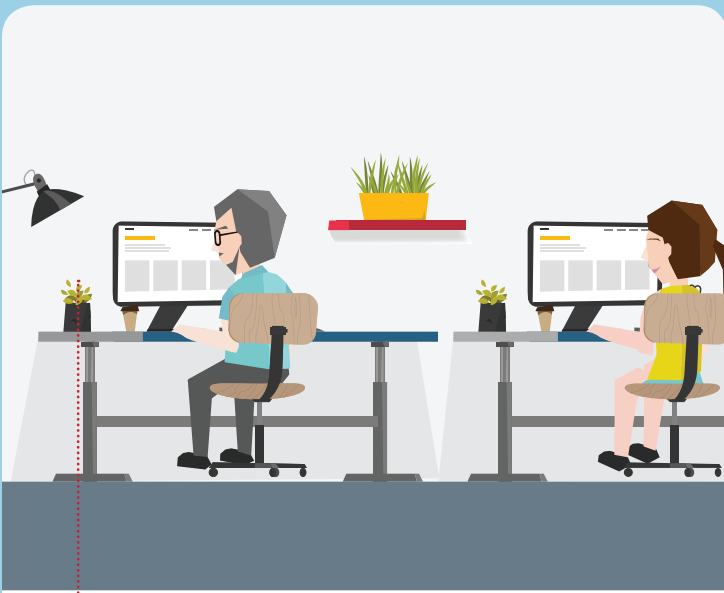
ON BOARD THE BUS

On-board units enable passenger counting, the data from which can help operators adjust timetables to meet demand.



- 2 **Free Wi-Fi creates added value for passengers.**

- 3 On board displays include information such as flight departures and news headlines. Advertising offers a potential revenue stream.



5 OPERATIONS CENTRE

- Intuitive user interface and simple, web-based deployment.
- Operator tools enable proactive fleet management for greater efficiency.



AIRPORT TERMINAL

- 6 **RTPI signs accurately show passengers when the next bus will arrive.**



DRIVER

Drivers don't have to worry about scheduling, instead focusing on driving safely and delivering excellent customer service. Driver satisfaction is increased through transparency of driving performance.

By harnessing the power of RTPI you have the ability to know where your buses are and how many passengers are on them, and the flexibility to deploy more buses should demand require them. Intelligent reporting can reduce operating costs by streamlining when buses run. But best of all, you can accurately show passengers when their vehicle will arrive, increasing their confidence that your bus will get them to the airport terminal in time for their flight.