



BUS STOP DATA MANAGEMENT

Novus-NaPTAN



All Local Authorities have a requirement to manage bus stop assets – including both the data essential to information systems and also the physical assets at the roadside itself. Novus NaPTAN provides a simple, intuitive platform through which authorities can manage all aspects of NaPTAN bus stop data.

Data is exported to the national database in accordance with the latest data standards, meaning authorities of all sizes can easily meet the government's open data legislation to manage and maintain NaPTAN information.

Fixed asset data can also be managed within Novus NaPTAN, including records of stop asset details such as shelter type, ownership and more. Accurate recording of this kind of information is an essential part of managing vast numbers of assets over large geographical areas.

Based on the same Novus technology that is trusted to manage bus service data by authorities across the country, Novus-NaPTAN uses mapping datasets from Ordnance Survey ensuring ultimate accuracy of bus stop location. Underlying mapping data enables stops to be easily found by locality, ATCO code, stop name or other search field.

Novus-NaPTAN is an entirely hosted solution and available at very low cost; and can be installed and configured in less than a day to ensure minimal disruption to day-to-day operations.

Key Benefits

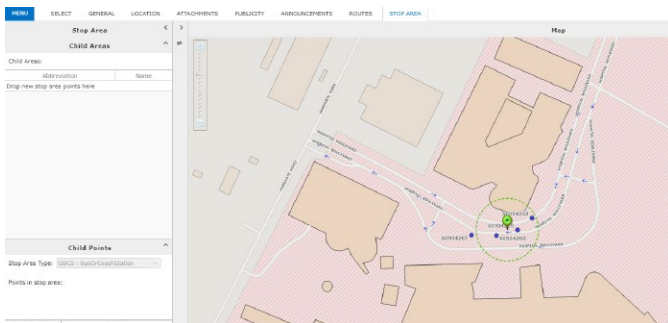


Increase efficiency:

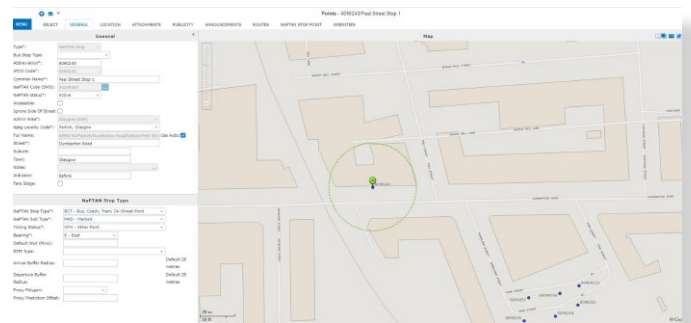
- Efficient: Reduce workload required to manage data for fixed assets
- Automate data exports – run overnight to your required schedule
- Compliance: Maintenance of accurate data ensures legislative compliance
- Cloud-based: easy access from anywhere, simple to set up
- Extendable: Incorporates NaPTAN schema updates; no-fuss upgrade path to the full Novus-FX solution

Features

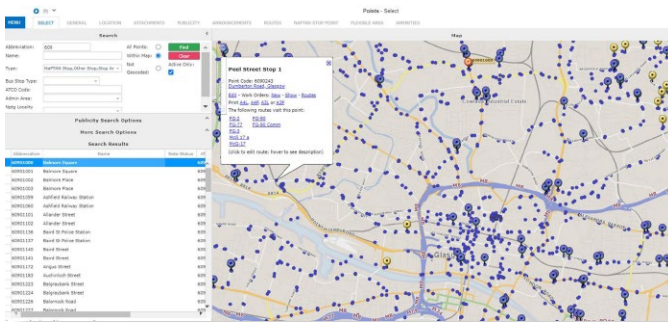
- Effortless management of accurate NaPTAN data – create, edit, move, archive
- All NaPTAN fields fully supported
- Management and maintenance of accurate data for fixed assets (shelters, benches, electric supply etc.)
- Assets and attributes are fully configurable to match your current dataset, enabling fast and simple data migration
- Powerful search function enables users to search for and select stops based on chosen criteria
- Find stops by a variety of fields including stop code or name, saving time for office staff
- Manage and record fixed assets and specific asset attributes
- Attach documents/images to stop records for use in survey results, letters and office documents
- Mapping information uses datasets from Ordnance Survey for accuracy
- Future proofed – changes to NaPTAN schema will be covered under maintenance agreement
- Cloud-based technology



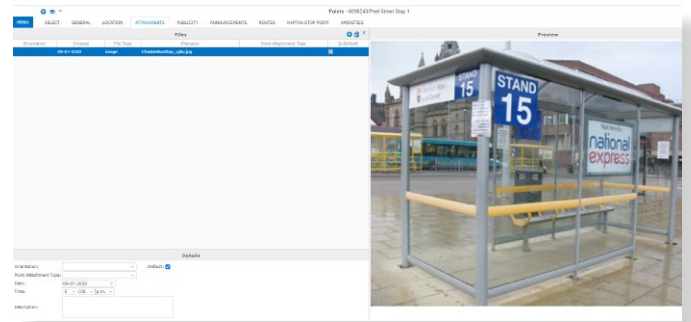
Create and manage stop groups and clusters



Manage individual NaPTAN records – detailed mapping data



Navigate, search and find stops easily



Attach images and documents

Connect with our Experts