



BUS STOP INVENTORY MANAGEMENT

 NOVUS BUS STOP MANAGER

Managing bus stop furniture is costly and time-consuming. Many authorities record 30 or more data attributes at each stop, including signs; kerb heights, types and ramps; and much more.

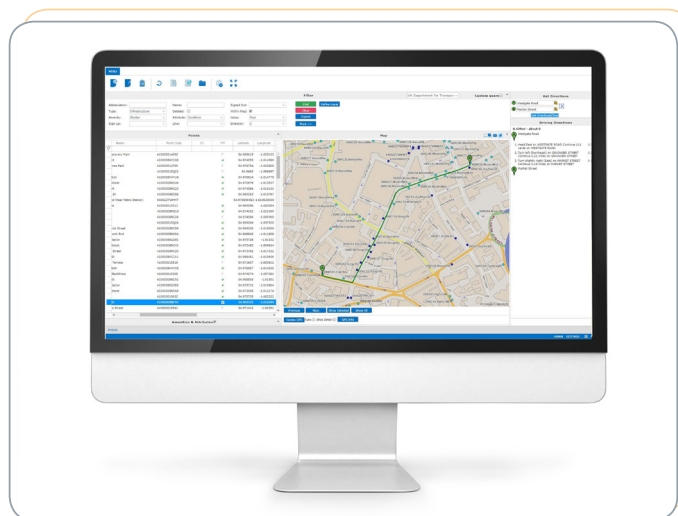
Storing this information in spreadsheets is both inefficient and prone to error - this is why we created NOVUS Bus Stop Manager (BSM), which stores all furniture data within a single, map-based system.

BSM reduces the admin effort required to maintain data and stops themselves, and ensures accuracy of information stored.

NOVUS BSM can easily import any existing data, and offers a range of tools to ensure ongoing accuracy; including work order management, and the ability to update the system from the street via a mobile Tablet PC - using location-aware geocoding to ensure the correct stop is updated.

Key Benefits

- Reduce time and cost of managing bus stop assets
- All furniture data in a single, fully connected system
- Easily view, manage and report on bus stop work orders
- Mobile access: update data from the bus stop
- Eliminate costly data errors



Effortlessly manage all furniture data in one place

info.uk@trapezgroup.com | 0808 281 1039

Copyright ©2018 Trapeze Software ULC, its subsidiaries and affiliates. All rights reserved. Any trademarks or registered trademarks mentioned herein are the property of their respective owners.

NOVUS BSM v2.0

 **Trapeze**[®]

www.trapezgroup.com



NOVUS BUS STOP MANAGER

Facilities Management

- Complete records of assets, amenities & historical data
- Support multiple asset types (metro, tram, ferry, highways)
- Customisable search filters; create custom fields for specific requirements
- Ensure locations meet safety & convenience requirements
- Use work orders to track asset repairs & improvements
- Manage available parts, labour and asset costs
- Geo-code locations with GPS or point & click on digital map
- Detailed reporting, including location histories, amenity changes & work order queries

Information Sharing

- Integrate location data with other applications
- Browser-based for easy access by remote users
- Update via mobile devices
- Multiple authorities can share a single system
- Easily follow up on passenger complaints
- NaPTAN compliant (import/export)
- GIS mapping provides visual reference for managers & surveyors
- Display streets, street names, landmarks etc.; supports photos & aerial views

Efficient Surveying

- Improve productivity of in-field data collectors: edit locations, view historical data & create work orders on the move
- Create & geocode new stops in the field using GPS
- Survey stops by route/direction; view route traces on the map
- Use GPS as a navigational tool to/from current position, landmarks, addresses, a point on the map
- Monitor surveyor progress through session tracking
- Reduce data input: surveyors can update in the field

TRAPEZE GROUP: Here for the journey

Trapeze Group supplies reliable, scalable and innovative solutions for the rail and road transport sector. Hundreds of private and public organisations in Europe, North America and Asia-Pacific have selected software solutions from the Trapeze Group in order to improve and broaden the efficiency, quality and scope of their transport solutions, thus enabling them to provide their customers with even more services in a more reliable and cost-effective manner.

info.uk@trapezegrp.com | 0808 281 1039

Copyright ©2018 Trapeze Software ULC, its subsidiaries and affiliates. All rights reserved. Any trademarks or registered trademarks mentioned herein are the property of their respective owners.

NOVUS BSM v2.0



www.trapezegrp.com